

Ashtons



to let
Ashtons
01904 731404

12

10

12 Whitton Place Osbaldwick YO10 3BJ

£1,250 PCM

2



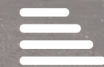
1



1



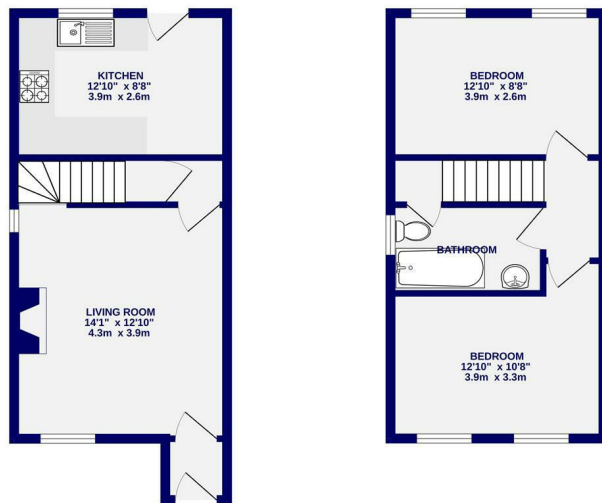
D



A well presented two bedroom end semi detached house located at the end of a cul-de-sac overlooking school fields within easy access of York centre and A64. The property is offered for let on an unfurnished basis. The property comprises of entrance hall, living room with electric fire, modern fitted kitchen with appliances to include fridge, freezer, washing machine, electric oven and hob. To the first floor are two double bedrooms and a bathroom with shower over the bath, wc and basin. To the rear is a large patio area. To the left of the property is a driveway.

Available 1st September 2026

Council Tax Band B / Deposit £1350 / EPC Rating D



TOTAL FLOOR AREA: 669 sq ft (62.2 sq m) approx.
 While every attempt has been made to ensure the accuracy of the floorplan, measurements of rooms and any other areas are approximate. It is advised to take professional measurements and verify parts of the contract.
 Total area and all responsibilities remain the sole responsibility of the advertiser. This plan is for illustrative purposes only and should be used as such for any prospective purchase. The network, systems, and appliances shown hereon may have changed and no guarantee as to their operability.
 Made with Metagen 02/24



Ashtons Lettings

01904 731404

lettings@ashtonsnet.com